



Maddie's Chronicle

MADDIE'S PET RESCUE PROJECT OF ALACHUA COUNTY

UPCOMING EVENTS:

Home for the Holidays

Adopt - a - thon

December 2 & 3
Oaks Mall South Lawn behind Macy's
Hundreds of animals present, as well as dog trainers, veterinarians, & Operation Catnip!

Party for the Pets

Auction & Casino night

October 21
Gateway Grand, Best Western
6:30-11pm
Contact Gainesville Pet Rescue for more info

Halloween Party for the Pets

October 28
Dogwood Park 2-5pm
Contact Haile's Angels for more info

O2B Kids Animal Day

November 4th
O2B Kids Newberry Road
10am - 2pm
Event will feature petting zoo, reptile display, & mascot Olympics with Maddie, Albert, Alberta and more!
Contact Alachua County Humane Society for more info

MADDIE'S HEADLINES

The Maddie's Partners are gearing up for a very exciting quarter! We are launching a community awareness campaign in October 2006 to inform the public of the life-saving work we do in Alachua County.

Over the past four years the partners of the Maddie's Project have reduced

euthanasia of healthy and treatable animals in the county shelter by over 55%!

A total of 8,063 dogs and cats were euthanized at the shelter in the year 2000, but with the help of the Maddie's Partners, this number has been reduced to 3,591 in Year 4 of the project!

In order to continue this amazing progress, we must have the full support of the community; adoptions, fostering and donations to support our efforts are critical to the success of the project. So please consider helping in whatever way you can!

How are we doing?
Take a look at the numbers below:

Animal Adoption Breakdown Comparison
Baseline Year 2000 to Project Year 4*

Maddie's Partner	Adoptions of Animals from Shelter		Total Adoptions	
	Baseline	Year 4	Baseline	Year 4
Alachua County Humane Society	20	821	99	948
Haile's Angels Pet Rescue	0	68	68	240
Helping Hands Rescue	0	88	65	223
Puppy Hill Farm Animal Rescue	0	369	105	484
Gainesville Pet Rescue	326	484	355	813
Alachua County Animal Services	n/a	n/a	1859	1486
Total	346	1830	2551	4194

*Project Year 4 (July 2005 – June 2006)

PETS OF THE MONTH

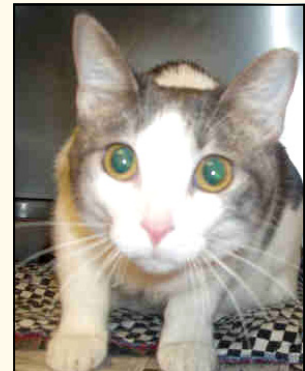


Pokey is a 1 year old, neutered, bloodhound mix. He is intelligent, active, and loves to play with other dogs.

Come meet Pokey at the Alachua County Humane Society today!

Zion is a spayed, white and gray, female Domestic Short-hair mix. She is approximately 3 years old and offers unconditional love.

She can be seen at Alachua County Animal Services: ID# A350381



You can view more animals from each partner online at :
www.petfinder.com or www.petharbor.com

Maddie's Chronicle



MADDIE'S PET RESCUE PROJECT OF ALACHUA COUNTY

The Maddie's Partners continue fighting to end euthanasia in Alachua County. Starting July 2006 the partner's goal is to eliminate the euthanasia of all "healthy" and "adoptable" animals in Alachua County.

It is critical for the public to understand that "healthy" and "adoptable" animals being saved does not mean that no animals at the county shelter will be euthanized. A "healthy" animal is one that does not need any type of medical treatment (heartworm treatment, treatment for skin conditions or ear mites etc). "Adoptable" animal means that an animal is free from behavioral issues that would require intervention (aggressive behavior, extreme fearfulness). This means that a very large number of the animals entering the shelter – by virtue of their mental or physical state are not considered "healthy".

For the Maddie's Partners to succeed we must have the full support of the community, adoptions, fostering and donations to support our efforts are critical to the success of the project. So please consider helping in whatever way you can!

Maddie's Fund is a family foundation funded by PeopleSoft Founder Dave Duffield and his wife, Cheryl, to help create a no-kill nation. The first step is to help develop programs that guarantee loving homes for all healthy shelter dogs and cats throughout the country. The next step will be to save the sick and injured pets and animal shelters nationwide.

Maddie's Fund is named after the family's beloved Miniature Schnauzer who passed away in 1997.

For more information, please call or visit us online:
(352) 373-5855 x 15
www.maddiespetrescueofalachua.org

MADDIE'S PET RESCUE PROJECT OF ALACHUA COUNTY

PARTNER AGENCIES

Maddie's Pet Rescue Project of Alachua County is a community collaboration of pet rescue organizations throughout Alachua County who are devoted to finding homes for homeless dogs and cats in Alachua County. The Maddie's project is working to end the euthanasia of healthy and treatable pets by 2011.

We hope you chose to support one of our partners, but in the event that you can't decide which one to choose, become a supporter of the **MADDIE'S CORPS.**

Any donations made to Maddie's Corps will exclusively fund collaborative projects between the Maddie's partners of Alachua County.

Please make any donations out to Maddie's Pet Rescue of Alachua County and send to:
Maddie's Fund
c/o Alachua County Humane Society
2029 NW 6th Street
Gainesville, FL 32609

1. Alachua County Animal Services

3400 NE 53rd Avenue
Gainesville, Florida 32609
Hours: Tues-Sat 9:30-5:30
Phone: (352) 264-6870
Fax: (352) 264-6869
www.AnimalServices.alachua.fl.us

2. Alachua County Humane Society

2029 NW 6th Street
Gainesville, Florida 32609
Hours: Mon-Sat 10-6, Sun 1-6
Phone: (352) 373-5855
Fax: (352) 373-1087
Thrift, Gift, & Pet Shop:
(352) 373-9522
www.AlachuaHumane.org

3. Haile's Angels Pet Rescue

5231 SW 91st Drive
Gainesville, Florida 32608
Hours: Mon-Fri 7-7, Sat 7-12
Phone: (352) 395-6131
www.HailesAngels.com

4. Helping Hands Rescue

14260 W Newberry Rd PMB 140
Newberry, Florida 32669
Hours: by appointment only
Phone: (352) 281-4358
www.HHRescue.com

5. Puppy Hill Farm Animal Rescue

P.O. Box 1743
Melrose, Florida 32666
Hours: by appointment only
Phone: (352) 473-3605
www.PuppyHillFarm.com
**Adoption site located within PetSmart (3736 SW Archer Rd.) on weekends. Please contact Puppy Hill for more information.*

6. Gainesville Pet Rescue

600 NW 75th Street Suite C
Gainesville Florida 32607
Hours: Thurs 10-8, Fri & Sat 10-6
Phone: (352) 331-1087
www.GainesvillePetRescue.org

2029 NW 6th Street, Gainesville FL, 32609 352-373-5855 x 15 Fax 352-373-1087
www.maddiespetrescueofalachua.org